



# LAXYO



LAXYO

We, the energy people....

[www.laxyo.com](http://www.laxyo.com)



## ABOUT US

LAXYO, an engineering Company established in mid-2007, with amalgamation of sister concern, is meeting the Niche of reliable service in the field of Fabrication and Erection of Steel Structure, Transmission Towers etc. It also executes various types of civil works including pipeline works, Operation and Maintenance of Thermal Power Plants, Railway Track related civil works (Registered with Indian Railway), and execution of electrical projects at reasonable and affordable cost.

With Commitment; We, the energy people.... LAXYO is offering excellent value added professional services in multiple engineering fields to industrial houses both in private as well as public sectors. With a combination of well-planned outsourcing of services to LAXYO and gainful utilization of available in house resources, industrial houses can reduce their operational cost, be free from day to day worries, concentrate on formulation of plans to achieve corporate goals and contribute significantly to fulfill 'VISION 2020' conceived and projected by our honorable Ex-president Mr. A. P. J. Abdul Kalam. We have focused approach with continuous improvement to enhance execution of Engineering projects and Working Standards by embracing the best available Technology and Practices to aim to become the leader in various types of Outsourcing functions in private and government sectors on item contract or/and turnkey basis projects as per need of the customers.

Laxyo ensures customer's total satisfaction by providing value based services and upholding their trust. Laxyo extends its customers the best services through its practice of frank and honest communication, skilled workmanship and commitment to the utmost level of professionalism. Laxyo offers high levels of quality, professionalism and efficient services to its customers by virtue of being a reliable Service Provider. The output is that Customer's project is executed in time and within budget. All this leads to develop in a commercially competitive, future oriented, creative and socially responsible organization.

## OUR VISION

To provide total quality services at a reasonable cost with professional, reliable, proactive and positive attitude on a long term sustainable, durable and trustworthy relationship for the best value addition to the utmost satisfaction of customers and also to remain one step ahead of others in our field of operation.

## OUR MISSION

To be the best service provider with an aptitude for application of latest techniques and inventions in the industry, continuous and progressive improvement in operational methods/ procedures, regular identification of training needs of staff and employees for enhanced productivity and development of on job multi-skill, creation of a permanent mechanism to search for avenues of establishing betterment in quality and reduction in cost of products/services for the ultimate benefit of the customers.

## WHY LAXYO?

We have focused approach with continuous improvement to enhance Operational and Working Standards by embracing the best available Technology and Practices to become the leader in Outsourcing functions of establishment of private railway sidings on turnkey basis projects, O & M work of Capacity Power Plants, Providing competent, experienced and qualified manpower as per needs of the customers and extending Rental Services Earthmoving Equipments.

## WORK PROFILE

### Turnkey Construction of Railway Track

- ◆ Supply of all P Way Materials, Signalling, Overhead Electrification Material.
- ◆ Remoulding of existing railway yard and railway lines as required by client.
- ◆ Formation of embankment, laying and linking of new BG tracks with all civil work.
- ◆ Rental Services Earthmoving Equipment.



### Steel and Pipeline Fabrication and Erection

- ◆ Bstructure Steel Fabrication work including Boilers and Turbine building work for Power Plants.
- ◆ Erection of the fabricated structure as per approved drawing.
- ◆ Complete Alignment of the erected structure.



### Civil Construction work

- ◆ **Road Development Work :** Cement Concrete Road, Asphalt Road Construction, RCC Slab Culverts and Minor Bridges Construction, Traffic signs, Markings & Other road Appurtenances, Sewer line construction & Sewer pipes relocation .
- ◆ **Township Development Work :** LAXYO is experienced in full spectrum of Infrastructure and Township Development works encompassing Master Planning, Detailed Design, Project Management, Pre & Post Construction, etc.
- ◆ **Building Construction Work :** LAXYO is experienced in construction of buildings it's based on general planning, instruction, and control (incl. repair, improvement, or demolition work).



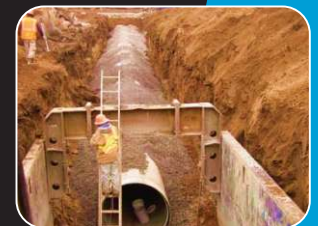
### Operation & Maintenance of Thermal Power Plants

- ◆ DCS operation.
- ◆ O & M of Boilers and associated equipments.
- ◆ O & M of Electrical and Instrumentation part.
- ◆ O & M of RO / DM / CHP / AHP
- ◆ Electrical / Mechanical Maintenance of ID / FD Fans, Pump / compressors Gear Boxes and Motors with Belt Conveyors and Shuttle Conveyors, Drag.



### Electical Work

- ◆ Laying of new 11/33/132 Kv lines etc.
- ◆ Erection of 33/11 Kv substations work etc.
- ◆ External and internal electrification, HT/Lt panels Substation and Lighting.



### Mining

- ◆ We are working on extraction of Lime stone from mines in Andra Pradesh which involves in blasting in the mines, drilling stones then dozing. Then the crushed raw material is transported to the cement manufacturing plants.





## DREDGING & RECLAMATION SERVICES

LAXYO ENERGY LIMITED's dredging verticle started its December in 2015. We are part of Laxyo Group, a reputable, Madhya Pradesh based group of companies with a lineage of more than 50 years. We are here to provide unparalleled services to our clients. We offer dredging and land reclamation services including operation and maintenance of portable dredgers. Backed by an enthusiastic team of qualified experts, we aim to establish ourselves in the private sector as a major dredging company.

### Our dredging services include:

- ◆ Capital dredging and maintenance dredging of harbors and ports
- ◆ Dredging of rivers and canals for irrigation and waterways
- ◆ De-silting lakes, reservoirs and ash ponds in steel plants
- ◆ Maintaining the intake channels in power plants
- ◆ Offshore pipeline trenching & Bacfilling
- ◆ Geophysical and hydrographic surveys
- ◆ Underwater photography and diving services
- ◆ Maintenance dredging
- ◆ Land Reclamation
- ◆ Rock Dredging (Under water drilling & Controlled blasting)

### What is dredging?

Dredging refers to the underwater excavation of silt, soil and sand. The process of dredging comprises of these below mentioned steps:

**Underwater Dredging :** This is done by deploying back hoe dredgers / grab dredgers / cutter suction dredgers and Trailer suction dredgers

**Transporting the dredged materia l :** This is done by following methods:

- ◆ Slurry dredged material is transported through pipeline from the cutter suction dredger to the dumping ground.
- ◆ Slurry/rock dredged materials is transported through self propelled dump barge or non propelled dump barge from the Back hoe dredger to the dumping in offshore
- ◆ Dry dredged material is transported by road on a vehicle.
- ◆ Slurry/sand dredged materials is transported though Trailer Suction hopper from the Trailer suction dredger to the dumping in offshore.

**Subsequent use of dredged material :** This is also done through two steps such as:

- ◆ Land development and land reclamation of low lying areas
- ◆ Building dams to fend floods

With strict attention to quality of service, we want to maintain transparency with our clients, employees, business associates, the society and the environment. We have blended corporate social responsibilities and growth strategies and have put in place efficient systems to ensure the safety of our employees and the safety of the environment.

### Our Objectives of Dredging :

- **Navigation** : To build basins, harbors, jetties, canals and other facilities and/or to develop, maintain, expand or otherwise to improve essential navigation connections to inland harbors and ports, so as to promote transportation of people, material and equipment using the waterways. Both capital as well as maintenance dredging helps to achieve this goal.
- **Construction and Reclamation:** To supply construction material like sand, clay, gravel and shell. To provide landfills, including the construction of residential and industrial areas, dams, airports and highways etc.
- **Flood Control:** To improve or maintain the discharge or flow capabilities of channels, rivers and other waterways by maintaining or enlarging the cross section or by re-aligning the water courses.
- **Environmental Remediation** : To remove or clean up the sub-aquedus or underwater pollutants from contaminated water bodies to improve the quality of water. As a matter of fact, dredging contributes a lot to the development, environmental and economic sectors of most countries.





## FOR PROMPT & EFFICIENT SERVICES

### Having sufficient fleet of heavy earth moving equipment in good working condition

- Crawler Crane
- Excavator
- Rock Breaker
- Transit Mixture
- Dozers
- Pay Loaders
- Vibrator Rollers
- Batching Plant
- Tippers
- JCBs
- Lifters
- Hydra

### Adequate Equipments to facilitate work execution

- MIG Welding Machines
- All Cut Machine
- Generator Sets
- Grinders in all Sizes
- Welding Rectifiers
- Argon Rectifiers
- Driller
- PUG Machine
- PLASMA Cutting Machine
- Thread TAP and DIE Set
- Compressors
- Diiferent T & P

Recruitment/Engagement of required man power on regular basis.

We have efficient and dedicated work force including Production Manager, Project Manager, Site I/C, Engineer, Supervisors, Personal & Admin person for Staff and Labours etc.

We have more than 2000 work force. Most of them have work experience of more than 10 years.

Already registered with different labour / P.F. / ESIC Authorities and have dedicated HR department to manage huge resources.

Associated with Power Plants, Railway, Rental Services Earthmoving Equipment and Professional advisors.

## OUR MAJOR PROJECTS

&

## RESPECTED CLIENTS

M/S Indian Railway  
M/S Bank Note Press (A Government of India Enterprise)  
M/S Bharat Petroleum Corporation Ltd. (A PSU)  
M/S Bhatia International  
M/S Binani Cement Ltd.  
M/S Birla Corporation Ltd. (Unit - Chanderiya - Rajasthan & Satna · MP)  
M/S Contenetal Warehousing Corporation (Neva Sheva) Ltd.  
M/S Dalmia Bharat Cement  
M/S Essar Construction India Ltd.  
M/S Geodesic Techniques Pvt. Ltd.  
M/S Gokul Refoils & Solvent Ltd.  
M/S Grasim Industries Ltd. (Aditya Birla Group Co.)  
M/S Indian Oil Corporation Ltd.  
M/S JK Cement Ltd. (Unit - Muddhol-Karnataka, Mangrol, Nimbahera, Rajasthan & Jhahhar-Haryana)  
M/S JK Laxmi Cement Ltd. (Unit - Sirohi · Rajasthan)  
M/S Jindal Rail Infrastructure Ltd.  
M/S Lanxess India Pvt. Ltd.  
M/S Larsen & Turbo (L & T) - ECC Division  
M/S Maral Oversease Ltd. (A LNJ Bhilwara Group)  
M/S Mundra Port & Special Economic Zone Ltd. (Adani Group)  
M/S Nagarjun Construction Company Ltd.  
M/S Nepa Ltd., Nepa Nagar (A PSU)  
M/S Nitin Spinners Ltd. (A 100% EXPORT ORIENTED UNIT)  
M/S Oriental Foundry Pvt. Ltd.  
M/S P & R Infra Projects Ltd.  
M/S Punj Lloyd Ltd.  
M/S Rajasthan Textile Mills (Sutlej Textiles & Industries Ltd. Group)  
M/S RSWM Ltd.  
M/S TBEA Energy (I) Pvt. Ltd.  
M/S Ultra Tech Cement  
M/S Yongnam Holdings Ltd., Singapore

# Our Offices

## Our Head Office

**LAXYO TOWER,**  
46/1, T.I.T. Road, Ratlam,  
M.P. - 457001

☎ +91 - 7412 - 232432

☎ +91 - 7412 - 220960

## Our Corporate Office

**LAXYO HOUSE,**  
County Park, Plot No. 2,  
MR-5, Mahalaxmi Nagar,  
INDORE, M.P. - 452010

☎ +91 - 731 - 4043798

☎ +91 - 731 - 6671777

## RO (Chittorgarh)

CF-5, Madhav Nagar,  
Chanderaia, Dist - Chittorgarh,  
Rajasthan, 312021

☎ +91 - 93515 55681



**LAXYO**

We, the energy people....



For More Details Please Visit Our Website at..

**[www.laxyo.com](http://www.laxyo.com)**

Email : [info@laxyo.com](mailto:info@laxyo.com)